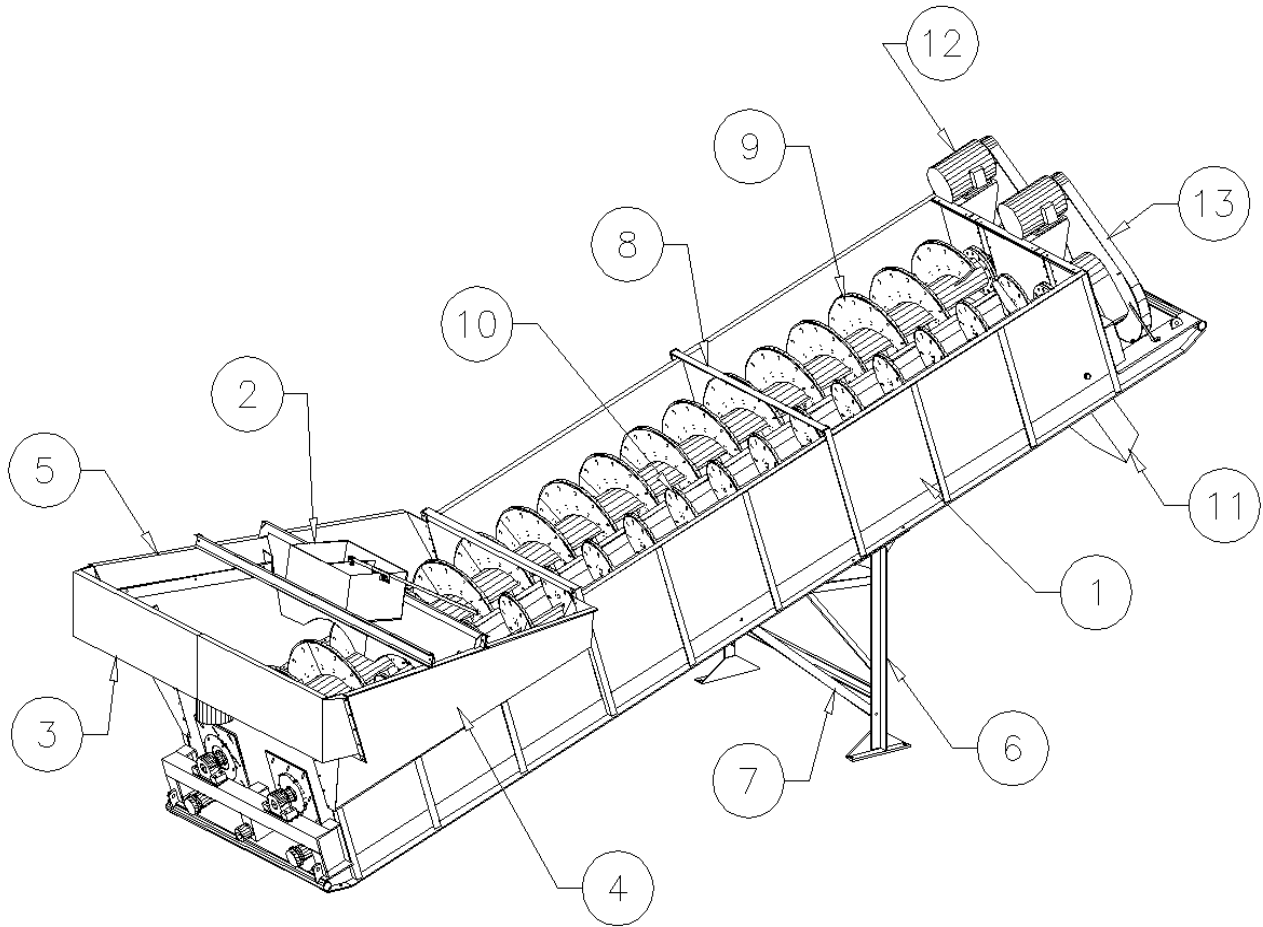


GREYSTONE, INC.

54" X 35' TWIN FINE SCREW

1



REF. NUMBER	PART NUMBER	PART NAME	QUANTITY	Wt. Lbs. Ea.
1	12604	TUB/SKID/UPRIGHT ASSEMBLY	1	
2	30832	INFEED HOPPER ASSEMBLY	1	
		BOLTS:		
	10570	" - 13 X 1-1/4" BOLT	4	
	10805	" - 13 NUT	5	
	10940	" LOCK WASHER	5	
	10578	" - 13 X 2" BOLT	1	
3	14783	OVERFLOW TROUGH ASSEMBLY	1	
		BOLTS:		
	10570	" - 13 X 1-1/4" BOLT	48	
	10805	" - 13 NUT	48	
	10940	" LOCK WASHER	48	
	10950	" FLAT WASHER	20	
4	12811	WING ASSEMBLY RH	1	
		BOLTS:		
	10570	" - 13 X 1-1/4" BOLT	42	
	10805	" - 13 NUT	42	
	10940	" LOCK WASHER	42	
	10950	" FLAT WASHER	6	

GREYSTONE, INC.

54" X 35' TWIN FINE SCREW

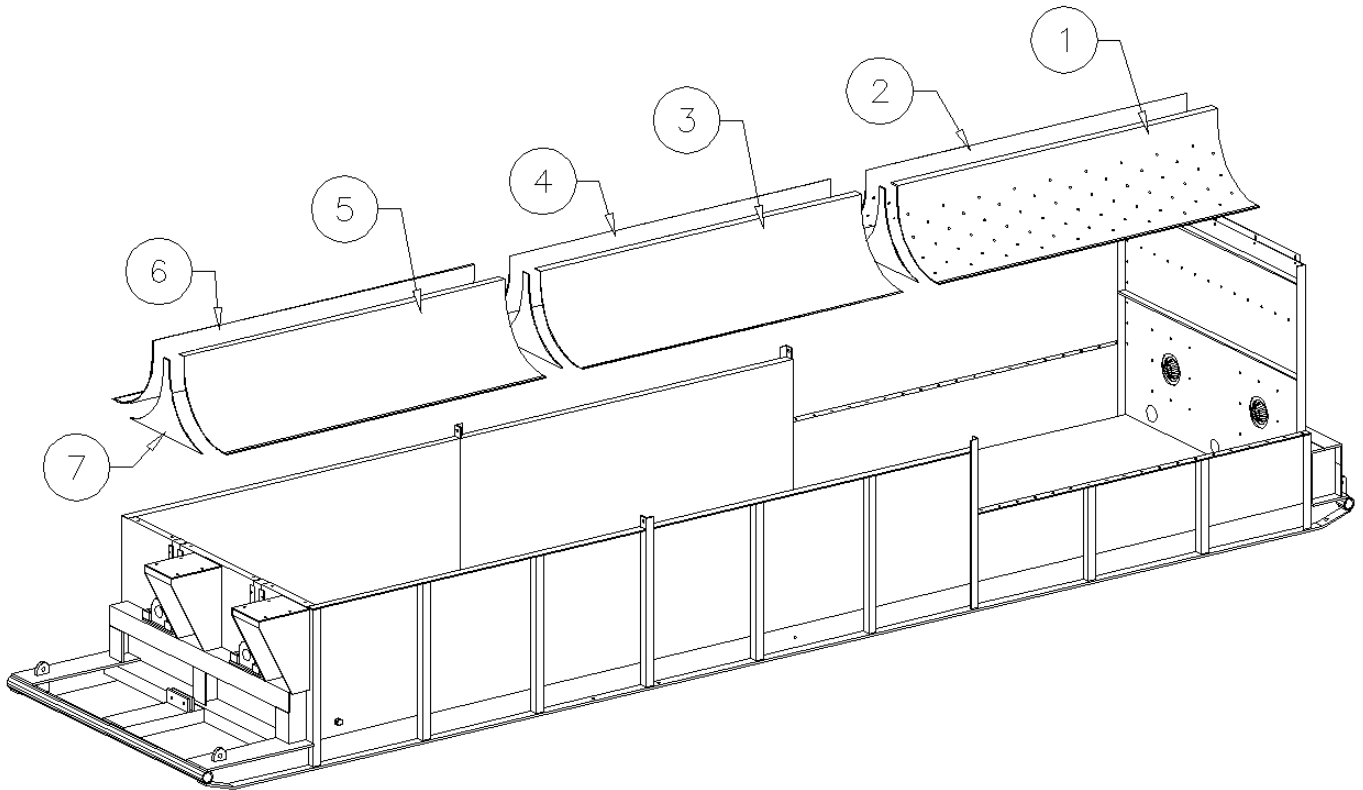
2

REF. NUMBER	PART NUMBER	PART NAME	QUANTITY	Wt. Lbs. Ea.
5	12808	WING ASSEMBLY LH	1	
		BOLTS:		
	10570	" – 13 X 1-1/4" BOLT	42	
	10805	" – 13 NUT	42	
	10940	" LOCK WASHER	42	
	10950	" FLAT WASHER	6	
6	14784	TIP FRAME ASSEMBLY	1	
		BOLTS:		
	10605	" – 10 X 2" BOLT	8	
	10810	" – 10 NUT	8	
	10945	" LOCK WASHER	8	
7	12493	TIP FRAME KNEE BRACE	2	
		BOLTS: (PER KNEE BRACE)		
	10605	" – 10 X 2" BOLT	2	
	10810	" – 10 NUT	4	
	10945	" LOCK WASHER	4	
	07654	" – 10 X 8" BOLT	2	
8	12474	TUB FRAME CROSS MEMBER	2	
		BOLTS: (PER CROSS MEMBER)		
	10605	" – 10 X 2" BOLT	2	
	10810	" – 10 NUT	2	
	10945	" LOCK WASHER	2	
9	12554	SCREW SHAFT RH ASSEMBLY (COMPLETE)	1	
10	12555	SCREW SHAFT LH ASSEMBLY (COMPLETE)	1	
11	12514	DISCHARGE CHUTE ASSEMBLY (OPTIONAL)	1	
		BOLTS:		
	10580	" – 13 X 2" BOLT	2	
	10805	" – 13 NUT	2	
	10940	" LOCK WASHER	2	
12		DRIVE ASSEMBLY	1	
13		MOTOR GUARD		
	14742	MOTOR GUARD FRONT ASSEMBLY	2	
	14743	MOTOR GUARD BACK ASSEMBLY	2	
		BOLTS:		
	10580	" – 13 X 2-1/2" BOLT	7	
	10805	" – 13 NUT	7	
	10940	" LOCK WASHER	7	
		TOTAL ESTIMATED SCREW WEIGHT		50,000

GREYSTONE, INC.

54" X 35' TWIN FINE SCREW

3

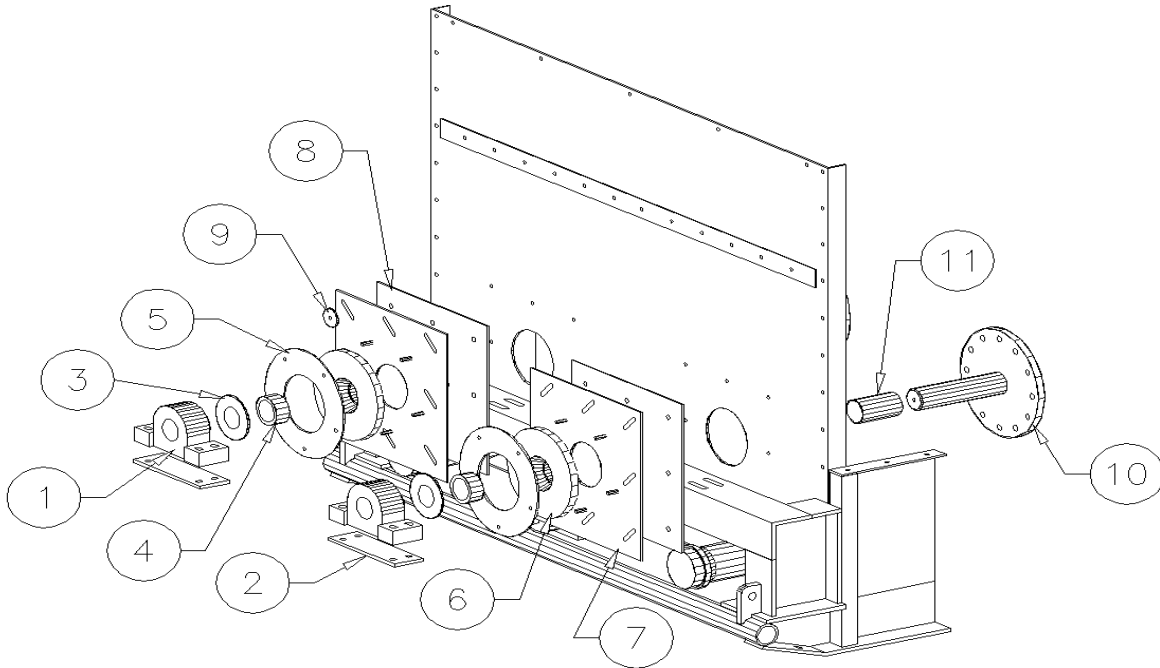


REF. NUMBER	PART NUMBER	PART NAME	QUANTITY	Wt. Lbs. Ea.
1	39083	BELLYPAN SECTION #1 LH	1	
2	39082	BELLYPAN SECTION #1 RH	1	
3	39081	BELLYPAN SECTION #2 LH	1	
4	39080	BELLYPAN SECTION #2 RH	1	
5	39081	BELLYPAN SECTION #3 LH	1	
6	39080	BELLYPAN SECTION #3 RH	1	
7	39117	BELLYPAN DIVIDER	3	

GREYSTONE, INC.

54" X 35' TWIN FINE SCREW

4

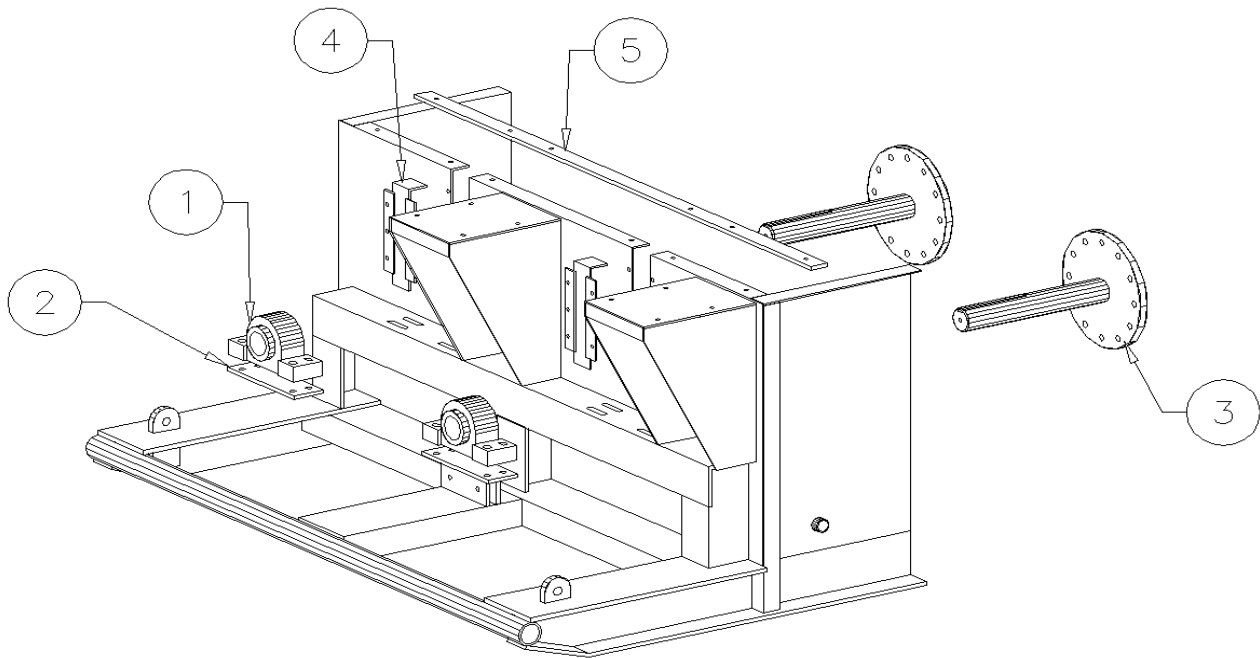


REF. NUMBER	PART NUMBER	PART NAME	QUANTITY	Wt. Lbs. Ea.
1	10418	BEARING	2	
		BOLTS: (EACH BEARING)		
	10620	" - 10 X 5" BOLT	4	
	10810	" - 10 NUT	4	
	10945	" LOCK WASHER	4	
	10955	" FLAT WASHERS	8	
2	31655	BEARING SHIM (OPTIONAL)	2	
3	35220	SLINGER	2	
4	36195	LOWER STUB SHAFT SPACER BUSHING	2	
5	35140	SEAL RETAINER PLATE	2	
	10805	" - 13 NUT (PER PLATE)	5	
6	35290	LOWER STUB SHAFT SEAL	2	
7	35190	LOWER SEAL ADJUSTMENT PLATE	2	
8	35160	ADJUSTMENT PLATE GASKET	2	
9	30420	ADJUSTMENT PLATE WASHER	16	
		BOLTS:		
	10578	" - 13 X 2" BOLTS	16	
	10805	" - 13 NUT	16	
	10900	" WASHER (RUBBER BACKED)	16	
10	39037	LOWER STUB SHAFT ASSEMBLY	2	
11	35320	WEAR SLEEVE	2	

GREYSTONE, INC.

54" X 35' TWIN FINE SCREW

5

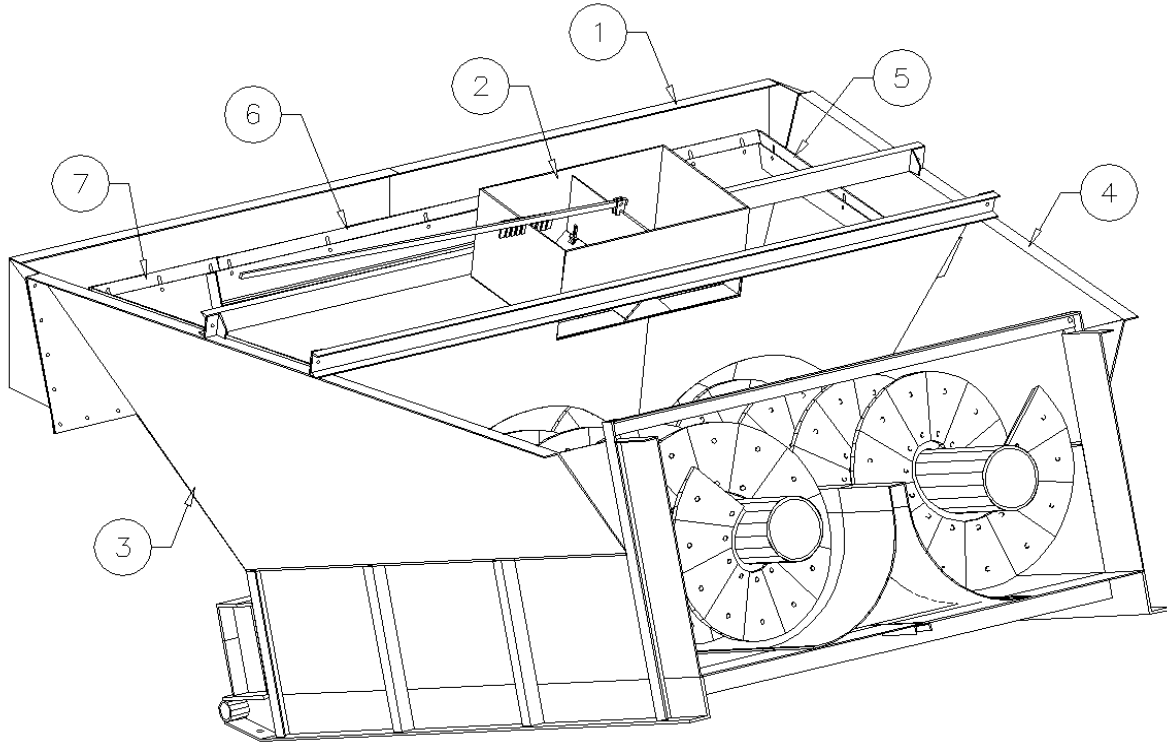


REF. NUMBER	PART NUMBER	PART NAME	QUANTITY	Wt. Lbs. Ea.
1	10420	BEARING	2	
		BOLTS: (PER BEARING)		
	10620	" - 10 X 5" BOLT	4	
	10810	" - 10 NUT	4	
	10945	" LOCK WASHER	4	
	10955	" FLAT WASHER	8	
2	31680	BEARING SHIM (OPTIONAL)	2	
3	39038	UPPER DRIVE SHAFT ASSEMBLY	2	
4	09973	UPPER END PLATE FILLER	2	
		BOLTS: (PER FILLER)		
	10572	" - 13 X 1 " BOLT	6	
	10805	" - 13 NUT	6	
	10940	" LOCK WASHER	6	
5	12427	UPPER END PLATE STIFFENER	1	
		BOLTS:		
	10572	" - 13 X 1-1/2" BOLT	7	
	10805	" - 13 NUT	7	
	10940	" LOCK WASHER	7	

GREYSTONE, INC.

54" X 35' TWIN FINE SCREW

6

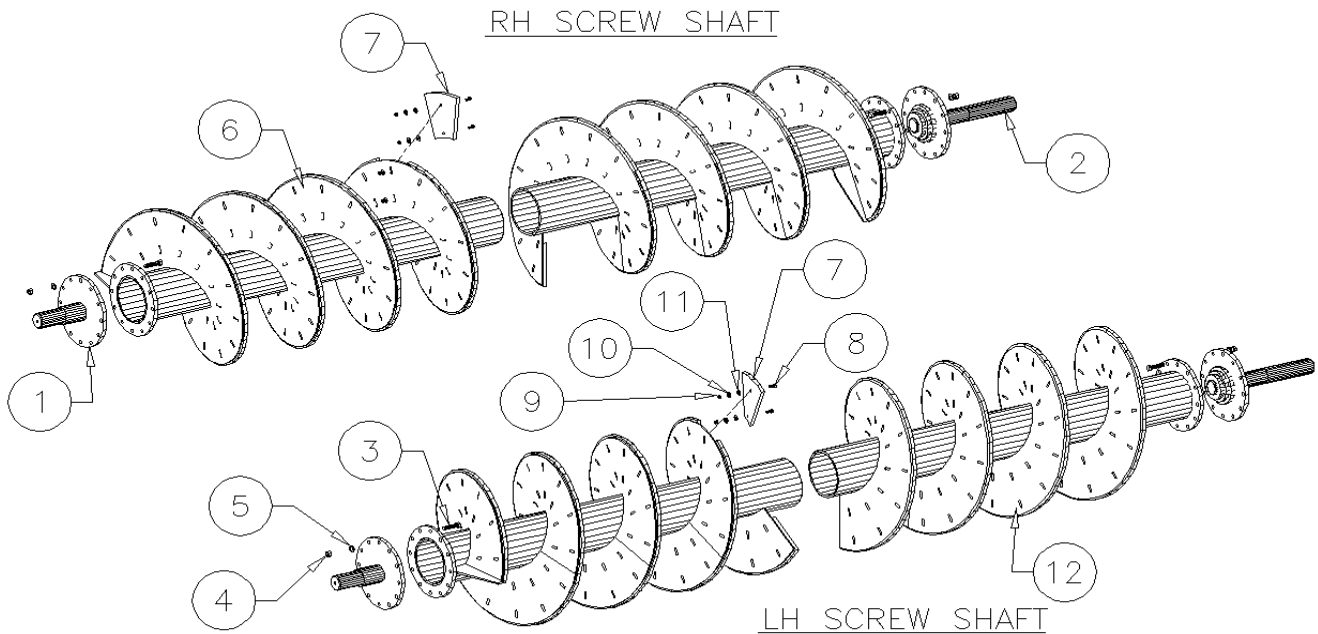


REF. NUMBER	PART NUMBER	PART NAME	QUANTITY	Wt. Lbs. Ea.
1	14783	OVERFLOW TROUGH ASSEMBLY	1	
2	30832	INFEED HOPPER ASSEMBLY	1	
3	12811	WING ASSEMBLY RH	1	
4	12808	WING ASSEMBLY LH	1	
5	12804	ADJ. WING SIDE WEIR PLATE	2	
		BOLTS: (PER PLATE)		
	10570	1/2" - 13 X 1 1/2" BOLT	4	
	10805	1/2" - 13 NUT	4	
	10940	1/2" LOCK WASHER	4	
6	12429	ADJUSTABLE OVERFLOW TUB END	1	
		BOLTS:		
	10570	1/2" - 13 X 1 1/2" BOLT	5	
	10805	1/2" - 13 NUT	5	
	10940	1/2" LOCK WASHER	5	
7	12805	ADJ. WING END WEIR PLATE	2	
		BOLTS: (PER PLATE)		
	10570	1/2" - 13 X 1 1/2" BOLT	4	
	10805	1/2" - 13 NUT	4	
	10940	1/2" LOCK WASHER	4	

GREYSTONE, INC.

54" X 35' TWIN FINE SCREW

7

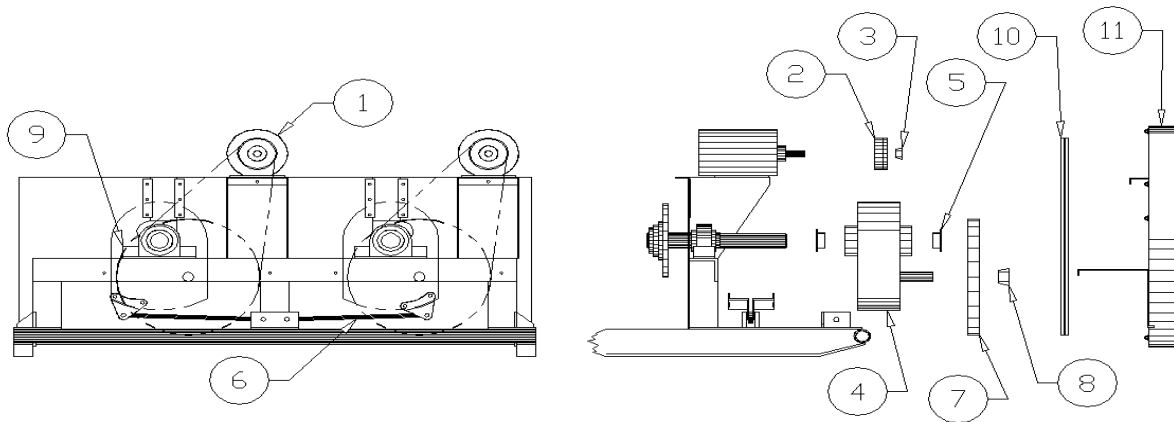


REF. NUMBER	PART NUMBER	PART NAME	QUANTITY	Wt. Lbs. Ea.
1	39037	LOWER STUB SHAFT ASSEMBLY	2	
2	39038	UPPER STUB SHAFT ASSEMBLY	2	
		BOLTS:		
3	10725	7/8" - 14 X 4" BOLT GR. 8	32	
4	10860	7/8" - 14 NUT GR. 8	32	
5	10920	7/8" FLAT WASHER A325	32	
	12554	RH SCREW SHAFT ASSEMBLY COMPLETE	1	8,620
6	14852	RH FLIGHT	17 _	
	39040	RH SCREW SHAFT W/FLIGHTS ONLY		
7	35590	WEAR SHOES (RUBBER)	210	
		BOLTS: (PER SHOES)		
8	10570	" - 13 X 1 " BOLT	2	
9	10805	" - 13 NUT	2	
10	10940	" LOCK WASHER	2	
11	10950	" FLAT WASHER	2	
	12555	LH SCREW SHAFT ASSEMBLY COMPLETE	1	8,620
	39107	LH SCREW SHAFT W/FLIGHTS ONLY	1	
12	14853	LH FLIGHT (RUBBER)	17 _	
7	35590	WEAR SHOES (RUBBER)	210	
		BOLTS: (PER SHOES)		
8	10570	" - 13 X 1 " BOLT	2	
9	10805	" - 13 NUT	2	
10	10940	" LOCK WASHER	2	
11	10950	" FLAT WASHER	2	

GREYSTONE, INC.

54" X 35' TWIN FINE SCREW

8



REF. NUMBER	PART NUMBER	PART NAME	QUANTITY	Wt. Lbs. Ea.
1		MOTOR (100% SPEED)	2	
		BOLTS:		
	10578	"- 13 X 2" BOLT	8	
	10805	" - 13 NUT	8	
	10940	" LOCK WASHER	8	
2	16978	MOTOR SHEAVE	2	
3	02322	MOTOR SHEAVE BUSHING	2	
4	04626	GEAR REDUCER	2	
5	03951	GEAR BOX BUSHING	4	
6		TORQUE ARM ASSEMBLY (INCLUDED W/GEAR BOX)	2	
		BOLTS:		
	10615	" - 10 x 4" BOLT	4	
	10810	" - 10 NUT	4	
	10945	" LOCK WASHER	4	
7	02513	GEAR BOX SHEAVE	2	
8	04657	GEAR BOX SHEAVE BUSHING	2	
9	10420	UPPER BEARING	2	
10	16562	BELT SIZE B-144	8	
11		MOTOR GUARD		
	14742	MOTOR GUARD FRONT ASSEMBLY	2	
	14743	MOTOR GUARD BACK ASSEMBLY	2	